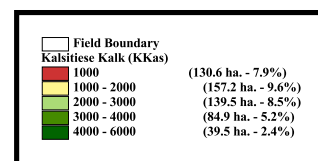
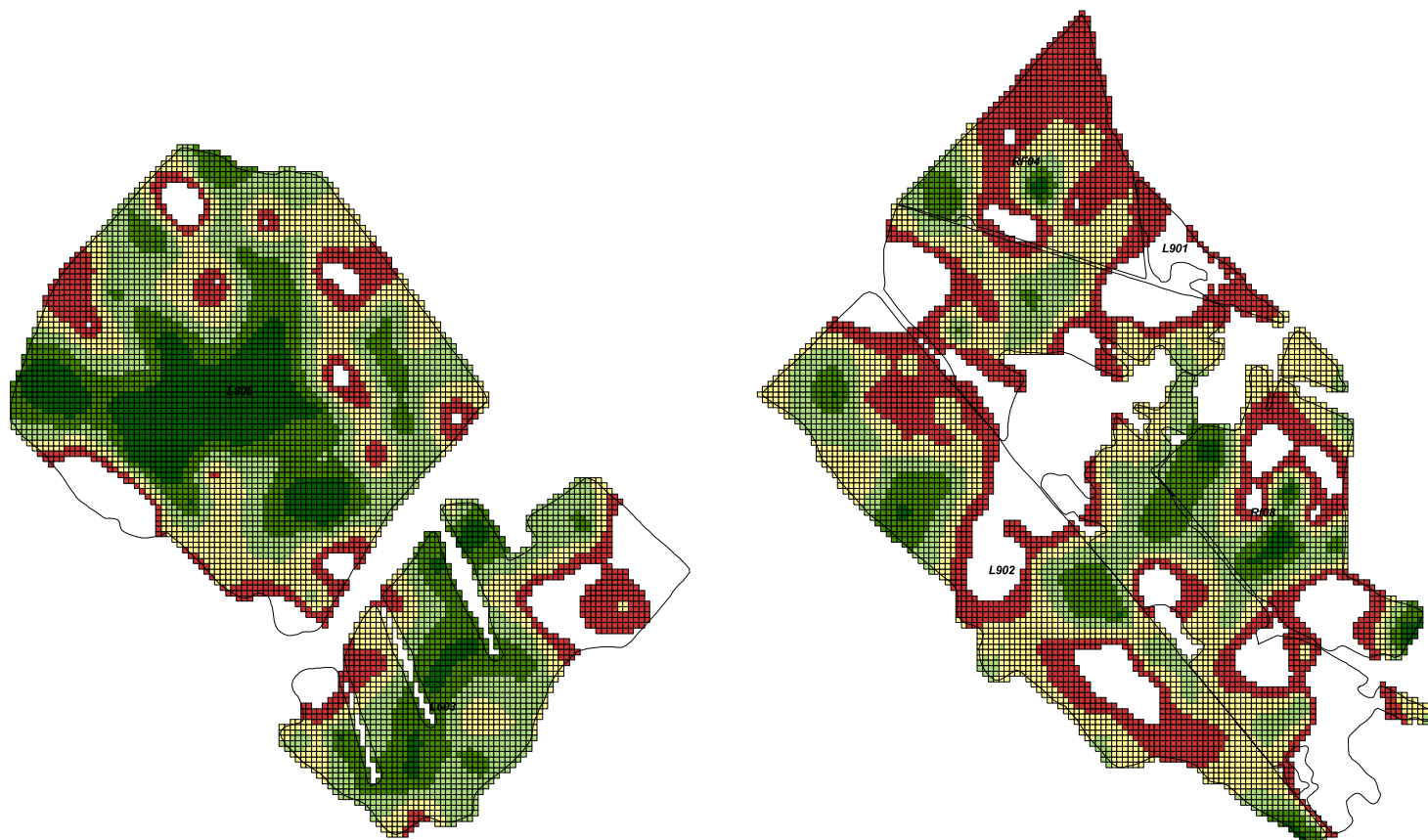


Kalsitiese Kalk Recommendation



Equation Used: KK

Date: Aug 31, 2008
 Field Name: Varkfrietf2droe08; 08
 Farm Name: Delmas

Total Hectares: 610.75
 Field Boundary Start Location:
 Latitude: -26.06608698
 Longitude: 28.45740148

Application Estimates:
 Product: Kalsitiese Kalk
 Min. Rate: 1000.0 Kg./ha.
 Max. Rate: 6000.0 Kg./ha.
 Avg. Rate: 2581.4 Kg./ha.
 Total Kalsitiese Kalk: 1329640.0 Kg.
 Total Kalk (115%): 1529086.0 Kg.
 Total Kalk1 (100%): 1329640.0 Kg.
 Total 2Kalk (47%): 624930.8 Kg.
 Total Kal30.4 (30.4%): 404210.6 Kg.
 Product Price per kilogram: \$0.00
 Product Cost: \$0.00
 Number of Hectares to be Applied: 515.08 Hectares
 Per Hectare Application Charge: \$0.00
 Anticipated Application Charge: \$0.00
 Total Cost: \$0.00
 Cost per Applied Hectare: \$0.00
 Total Hectare Cost: \$0.00

